

A dynamic background image showing a splash of clear water against a light blue background. The water is captured in mid-air, with many small droplets and larger splashes, creating a sense of movement and freshness. The overall color palette is cool and aquatic.

CALIDAD DE AGUAS SUBTERRANEAS

LABORATORIO BROMATOLOGICO

***DEPARTAMENTO DE SALUD E
HIGIENE***

INTENDENCIA DE SALTO.

SETIEMBRE 2008

QF MARCELO LUCAS

ESTUDIOS REALIZADOS PARA AGUAS SUBTERRANEAS 2006-2007

<i>ESTUDIO</i>	<i>POTABILIDAD</i>	<i>REF. TAMBO</i>
<i>G. Totales/mL.</i>	<i>X</i>	
<i>Colitotales/100 mL</i>	<i>X</i>	<i>X</i>
<i>Colifecales/100 mL.</i>	<i>X</i>	<i>X</i>
<i>P. aeruginosa/100 mL.</i>	<i>X</i>	
<i>Dureza (mgCaCO3/L)</i>	<i>X</i>	<i>X</i>
<i>pH</i>	<i>X</i>	<i>X</i>
<i>Nitratos y Nitritos (ppm)</i>	<i>X</i>	<i>X</i>

EQUIPO DE TRABAJO

- Director: Dr. Eduardo Muguruza
- Jefe Div. Insp. Higiene: Dr. Vet Domingo Paulino.
- Laboratorio: Aux. Alicia Sarmiento
 Lic. Ana Escanda
 QF Marcelo Lucas

DIVISION HIGIENE

**LABORATORIO
BROMATOLOGICO**









Nitrat
Nitrit

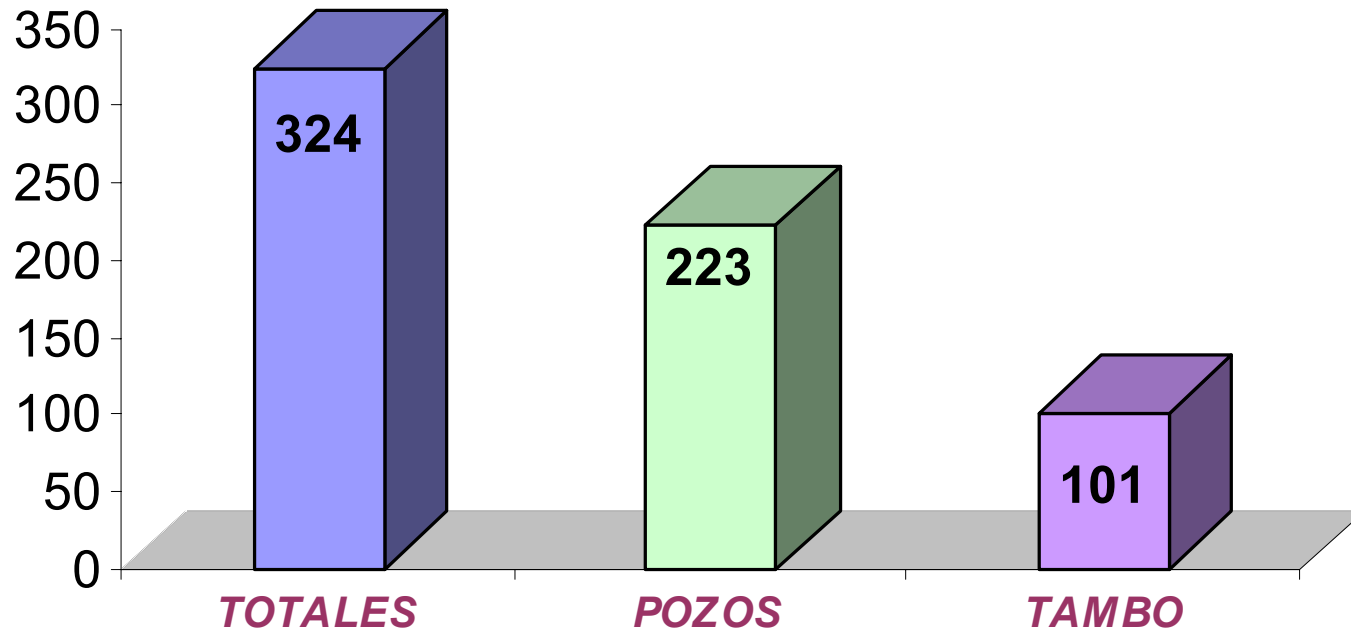
REF 913 13
100 Teststäbchen 0
100 Test Sticks
mg/l NO₃⁻ 10
Nitrat(e)
25
50
100
250
500

2010-02

Agua
destilada



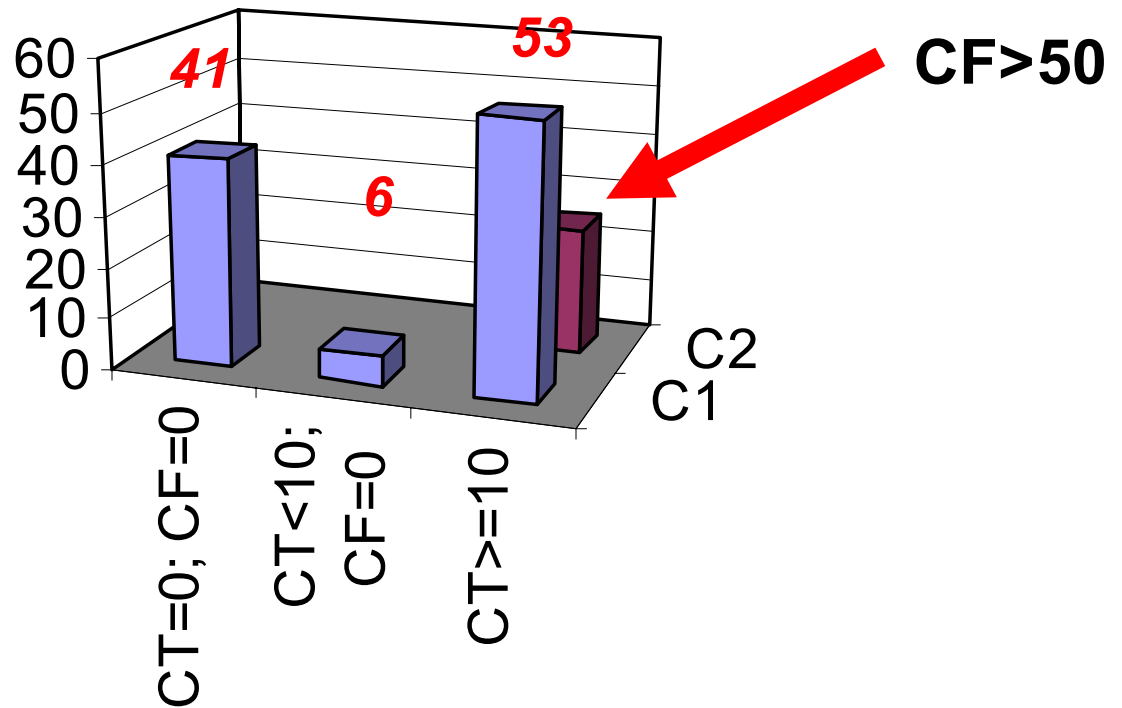
POZOS ANALIZADOS 2006-2007



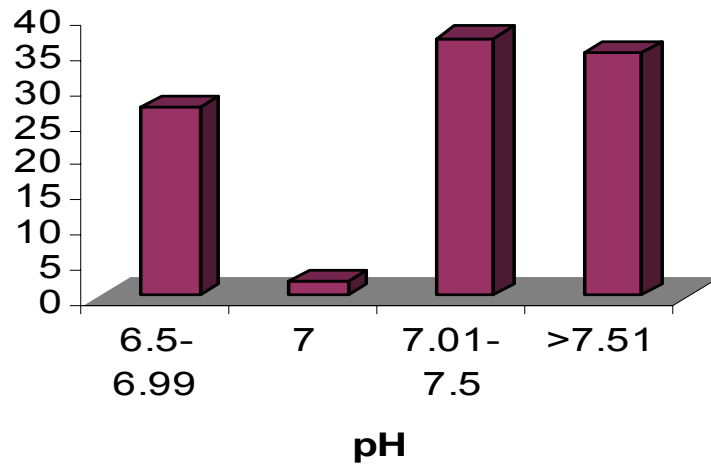
The background of the image is a close-up, high-speed photograph of water splashing, creating numerous bubbles and droplets. The water is a clear, light blue color. In the center of the image, there is a large, bright yellow oval with a thin black border. Inside this oval, the text "POZOS DE TAMBO" is written in a bold, black, sans-serif font.

POZOS DE TAMBO

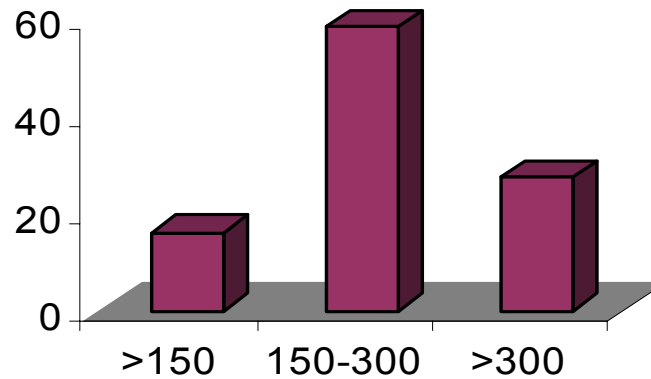
Calidad Microbiológica



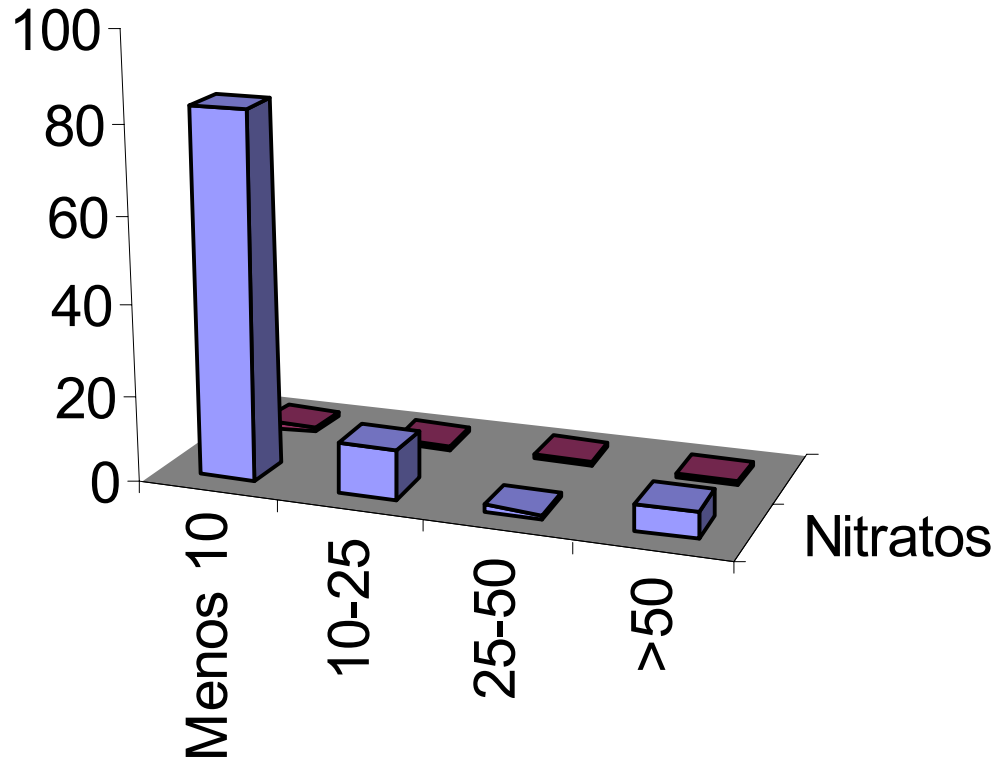
ESTUDIO DE pH



DUREZA (mgCaCO₃/L)



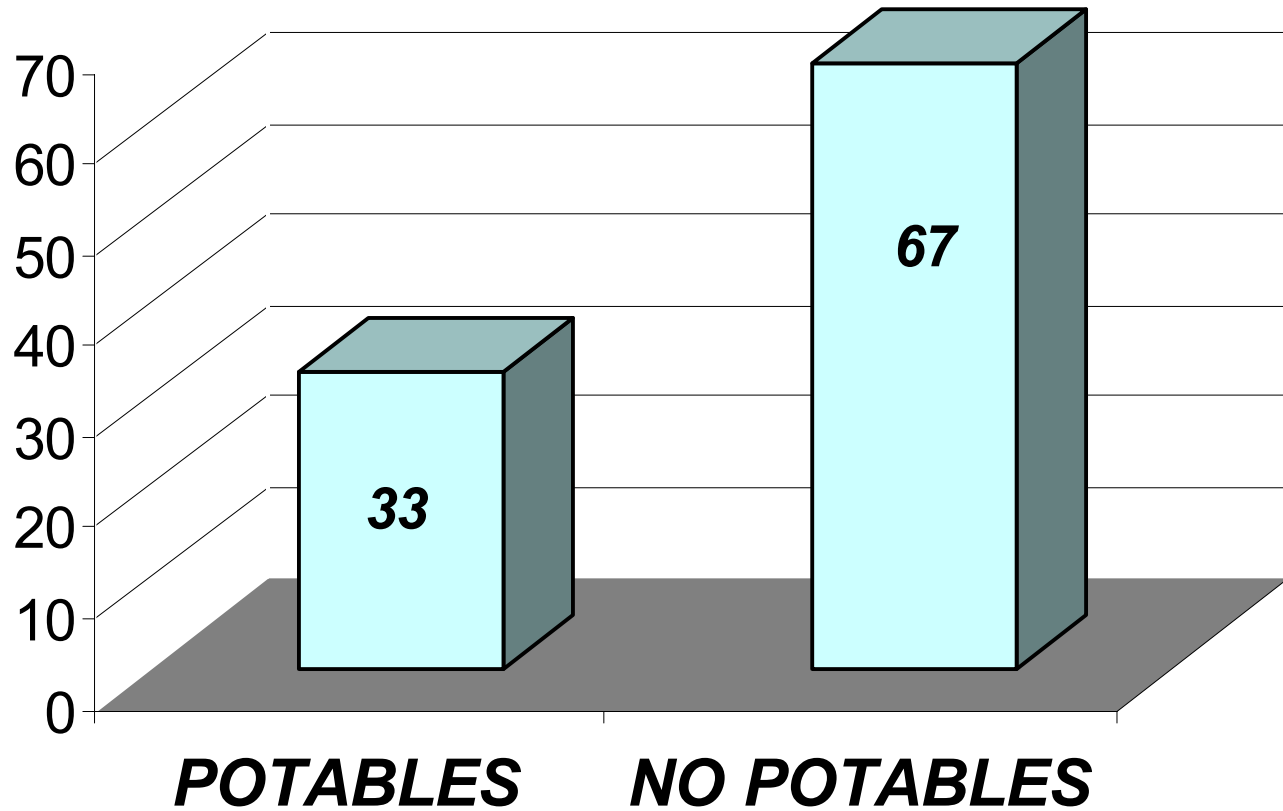
NITRATOS Y NITRITOS (ppm)



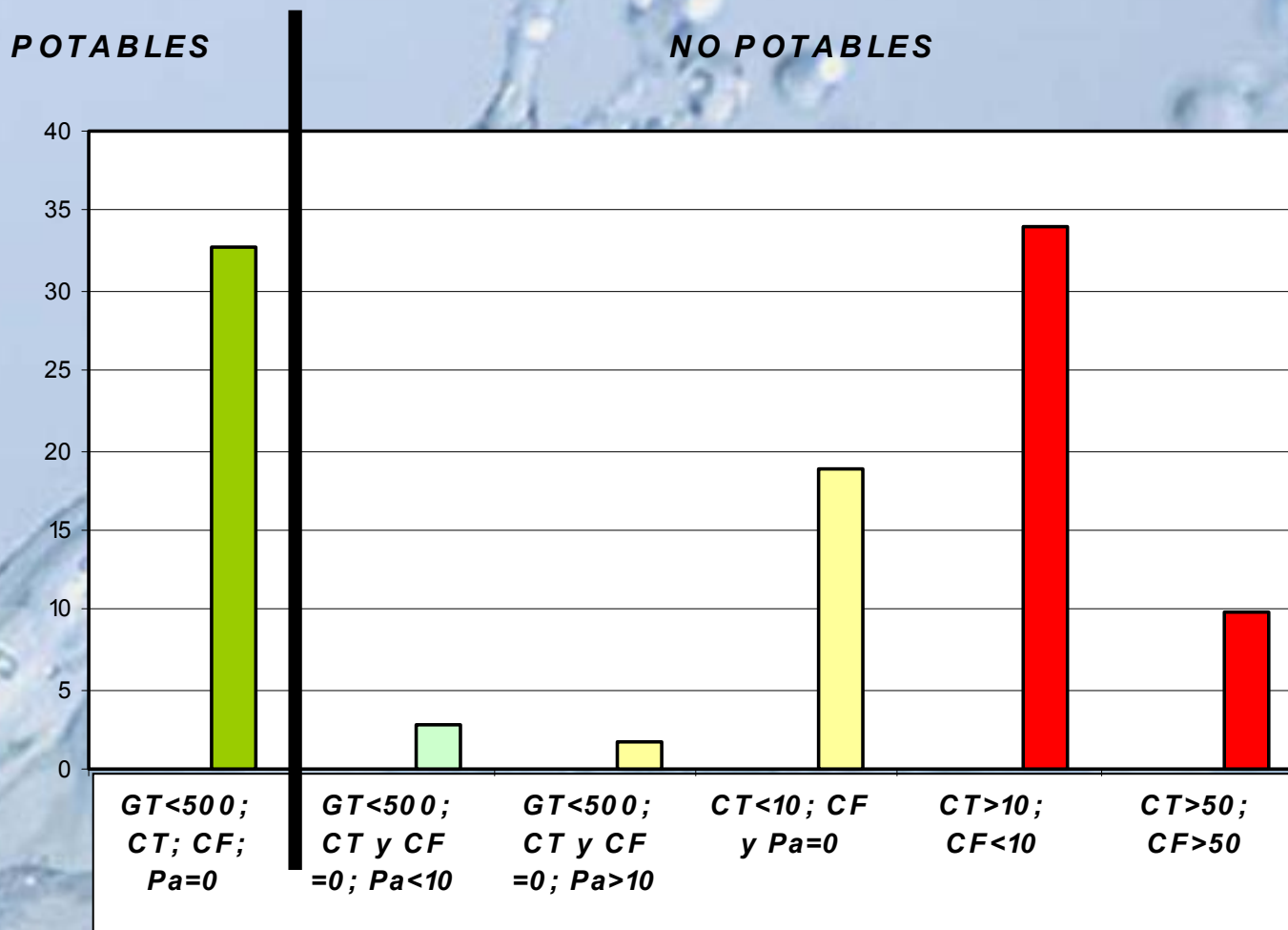
The image features a background of a water splash with various droplets and ripples. A large, bright yellow oval is centered on the page, containing the text "POZOS: POTABILIDAD" in a bold, black, sans-serif font.

POZOS: POTABILIDAD

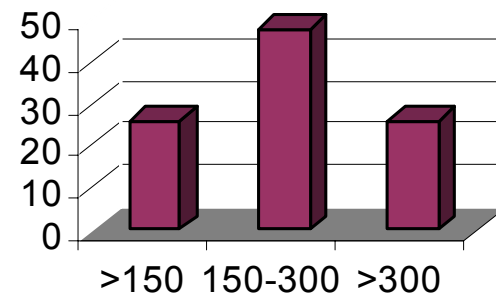
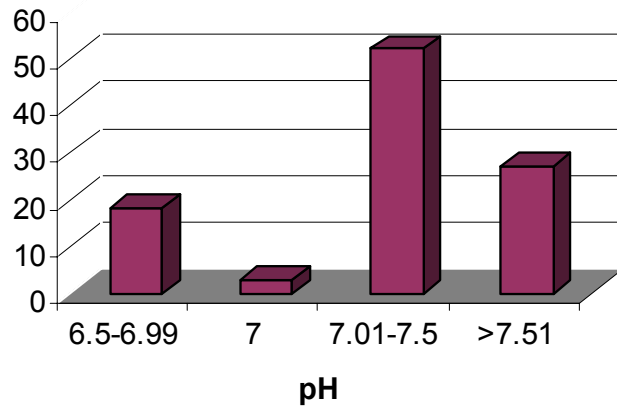
POTABILIDAD MICROBIOLÓGICA



CALIDAD MICROBIOLÓGICA (%)

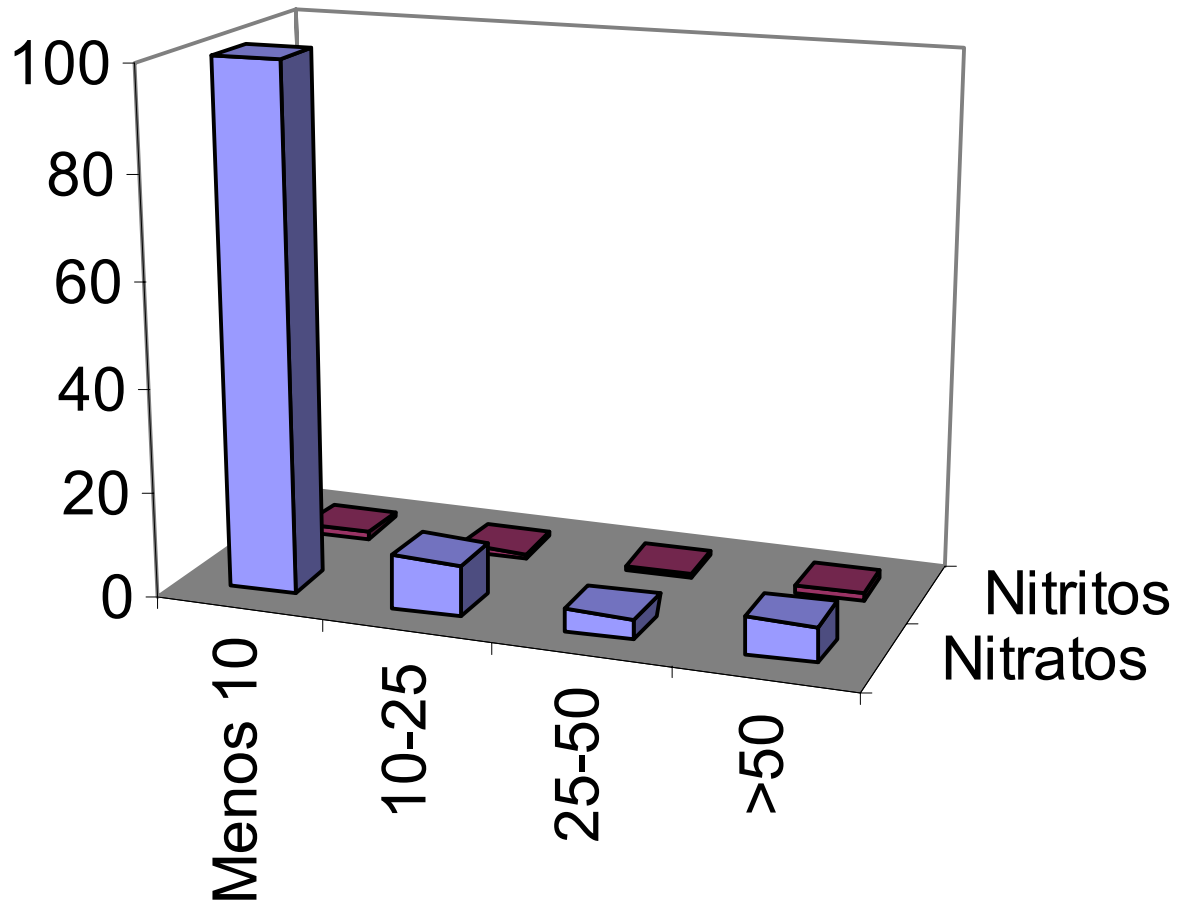


pH(%)



Durezza
(mgCaCo3/L)

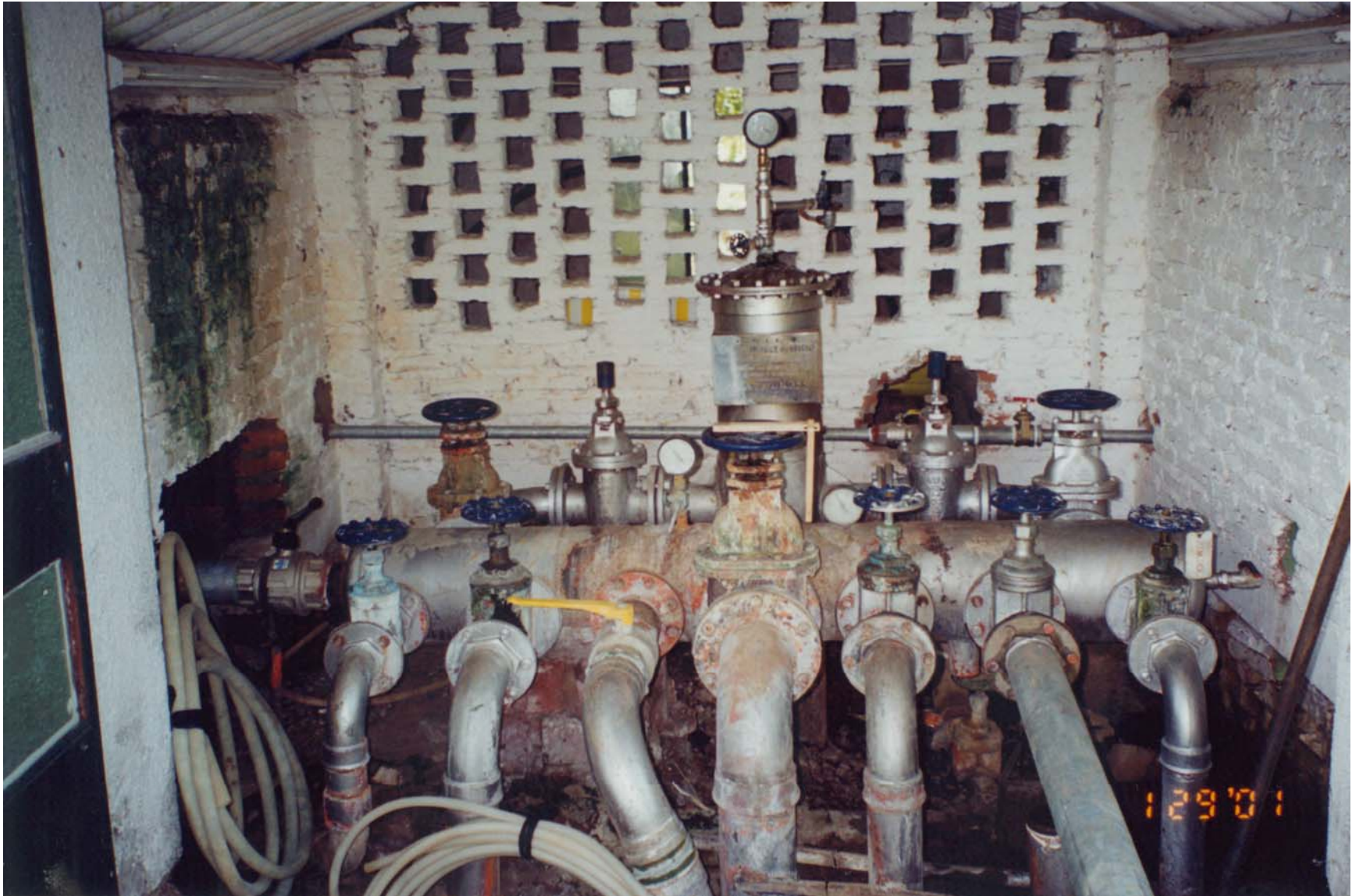
NITRATOS Y NITRITOS (ppm)



POZOS TERMALES SALTO

- ***Trabajo en conjunto con la Intendencia de Salto y Proyecto Acuífero Guaraní.***
- ***Capacitación, equipamiento, intercambio***









Pozos termales de Salto

	Club Remeros	Horacio Quiroga	Posada S XIX
Prof (m)	1326	1245	1209
Caudal (m³/h)	135	230	190
Uso	Recreativo	Recreativo	Recreativo
T (°C)	45	44	46.5
CE (uS/cm)	750	890	600
pH	8.3	8.3	8.3
CT y CF	0	-	0
Nitaros y Nitritos (ppm)	Menos 10 y menos 1	Menos 10 y Menos 1	Menos 10 y menos 1

Aportado por Ing Enrique Massa

Facilitador local Salto- Concordia

	Fuente Nueva	T. Dayman	T. Arapey
Prof (m)	1280	2206	1494
Caudal (m³/h)	180	125	192
Uso	Recreativo	Recreativo	Recreativo
T (°C)	45.5	45	40
CE (uS/cm)	380	766	492
pH	8.4	8.4	8.0
CT, CF y Pa	0	0	0
Nitaros y Nitritos (ppm)	<10 y <1	<10 y <1	<10 y <1

Aportado por Ing Enrique Massa
Facilitador local Salto- Concordia